

# quatreau®

HOTELS, RESTAURANTS, AND BUSINESSES



WASH/DRAIN  
AND STERILISE



CHILLED



SPARKLING

## HydreauBar™

smart bottling station



### HYDREAUBAR™

"Independent microbiological tests carried out on bottles sterilised by HydreauBar™ show a consistent Log7 reduction in pathogenic contamination in refillable glass bottles making it the only system on the market suitable for hygienic refill of bottles for human consumption"

Hydreaubar - Sterilises and fills upto 100 bottles / hour

# YOUR HYDREAUBAR™

SUSTAINABILITY AT ITS BEST...  
THE SMART BOTTLING STATION, OFFERING LOG7 REDUCTION IN PATHOGENS



## HOTELS, RESTAURANTS, & BUSINESSES



## BOTTLING OPTION

### HYDREAUBAR™ 750ML BOTTLE

There are 2 bottle options available, screw cap and swing cap. Each will hold 750ml of still or sparkling water with the option to have your bottles branded for the business. Manufactured to a glass thickness that complies with TEC7 regulatory requirements for reusable glass bottles.

### SUSTAINABILITY

**Join the refill revolution and rid our industry of single-use plastic drinking bottles.**





## CASE STUDIES

MADE IN THE UK

### GREAT FOSTERS COUNTRY HOUSE HOTEL, SURREY

Richard Young, General Manager at Great Fosters Hotel reports, "Food and beverage are of paramount importance and are reflected in our overall reputation. I was amazed at the difference that the quality of water could bring to many of our services. Our own brand bottled water is now truly pure and tastes great. Our tea and coffee look clear and more appealing than ever before and with no unsightly residue floating on the surface as so often happens with tap and filtered water. The ice is crystal-clear, and guests regularly comment on the clarity. The steam ovens also use pure water and I'm told that pure water helps to retain more of the nutritional value of food so our guests can enjoy the great food whilst benefiting from increased nutritional value!

### LE MANOIR AUX QUAT'SAISONS OXFORDSHIRE

Chef Patron Raymond Blanc's Michelin starred restaurant and hotel, Le Manoir aux Quat'Saisons uses the HydreauBar.

Quatreau is embraced throughout the kitchens and cooking school with food preparation benefiting from fully purified water using our patented RO technology. Hotel guests enjoy the purity and taste of beautifully clear and full flavour infusions, perfect coffee, and crystal-clear ice. Bathing water is softened and conditioned making an altogether more pleasurable experience, enhancing the condition of hair and skin.

Our Quatreau is just one of the ways in which Le Manoir ensures diners and guests enjoy the best experience possible.

# HYDREAUBAR™

FILL 100 BOTTLES PER HOUR



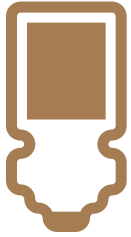
## FEATURES

- Chilled and sparkling pure water
- Single or twin bottle configuration
- Delivers up to 100 bottles per hour HydreauBar
- Log7 Reduction in pathogens, consistent 100% proven pass rate
- Fully sterilises all internal surfaces without chemicals using patented technology
- Single manual fill or twin auto fill, calibrated to fill bottles 750ml-1ltr
- Individual bottle recognition



# HYDREAUBAR™

## FEATURES



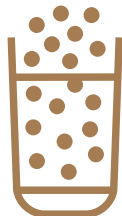
### WASH/DRAIN AND STERILISE

#### WASH STATION

- Simultaneously sterilises and fills multiple bottles
- Eliminates pathogens and microbes on internal surfaces, not achieved from washing alone
- Zero water waste



### CHILLED



### SPARKLING

#### FILL STATION

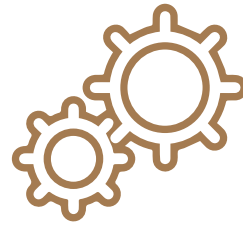
- Automatically fills multiple bottles
- Auto shut-off
- Individual bottle recognition to comply with weights and measures regulations
- Choice of two waters; chilled and sparkling
- Production Rate 5-120 litre/hr at circa 4C-7C for the HydreauBar
- Twin station sterilisation and refill
- 120 litre/hr at circa. 4C, 240 litre/hr at circa 7C
- Service required are 2 double 13 amp sockets, trapped waste and isolated ½" (15mm) mains cold water supply



# GWS PURIFICATION SYSTEMS

## ENHANCED SAVINGS

- Purer than all bottled water brands
- Lower costs with increased margins
- Lower maintenance costs on machines
- Longer equipment life
- No need for water softeners/salt
- No detergent required
- Glassware lasts longer
- Enhanced flavours of coffee and tea



### GWS Purification System Options

**Install a GWS G500 purification system** for the ultimate quality of water throughout. High-flow continuous 400 GPD drinking water system

Stunningly compact and environmentally friendly, the G500 purification system provides continuous, clean, fresh, great-tasting drinking water. The G500 system eliminates unpleasant taste and odor and removes chlorine and contaminants such as heavy metals, pesticides, and chemicals. We refined, re-imagined, and re-engineered everything you know about water purification from inside out. The result is an elegant all-in-one water purification system that is as much a work of art as it is a state-of-the-art purification system. Optional RO storage tank.



### Anti-Scale

The OneStop+™ system provides protection from scale formation on internal and external plumbing surfaces. Additionally, it reduces heavy metals such as copper, lead, mercury, zinc and cadmium. It can be installed at the point of entry to a building to treat both hot and cold water, or it can be located directly before a water heater, boiler, or other water using device that requires protection from hard water.

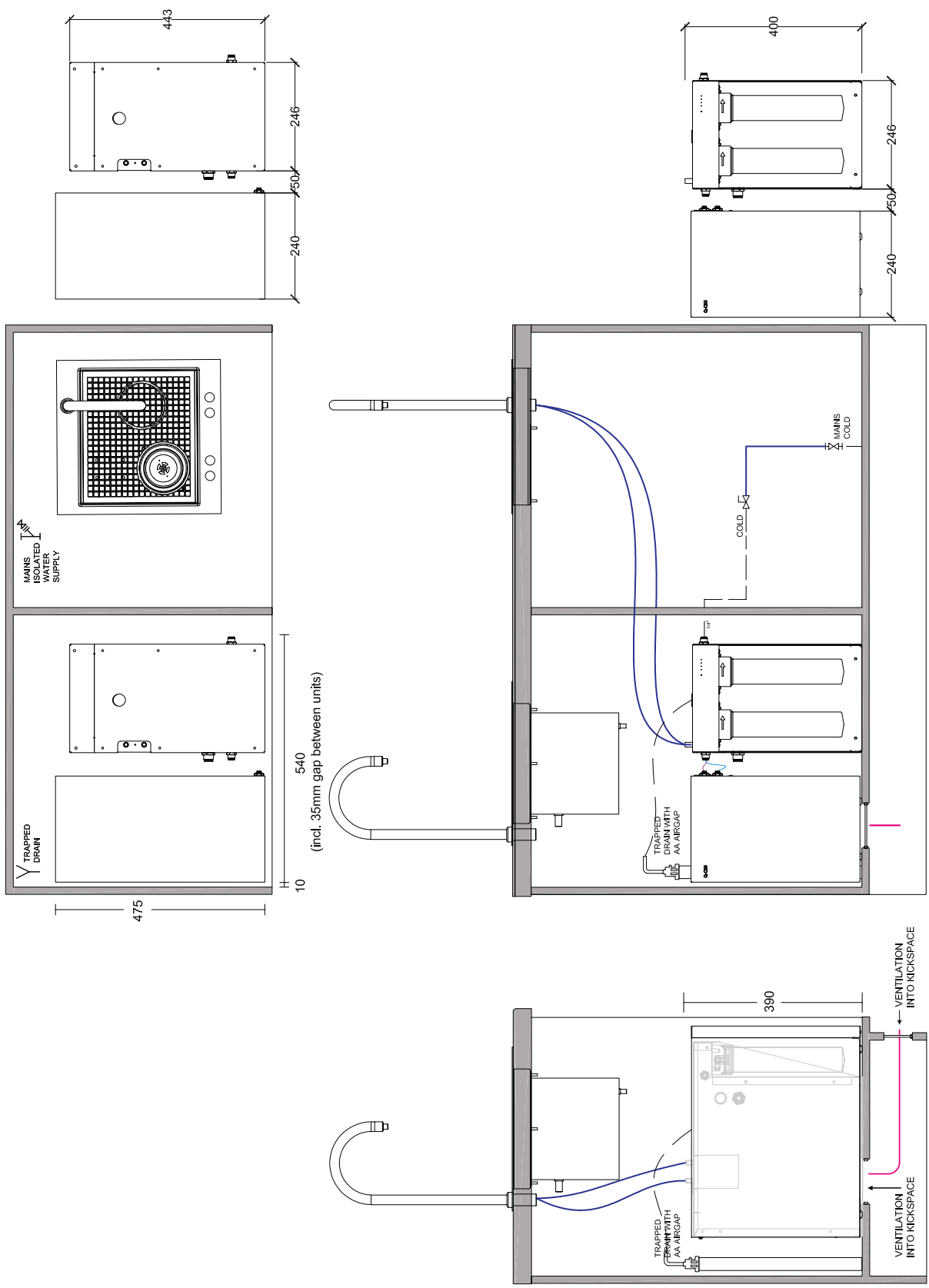
- Prevents scaling by converting limescale into harmless crystals
- Retains essential minerals and reduces existing limescale deposits
- Environmentally friendly
- No electricity or salt required



# HYDREAUBAR™

SUSTAINABLE SOLUTIONS FOR HOTELS, RESTAURANTS, AND BUSINESSES

## TYPICAL INSTALL DIAGRAM





# YOU'RE IN GOOD COMPANY

Quatreau taps are used worldwide and supported by our global distribution partners.

Quatreau is installed in many of the world's leading buildings.

The sleek design of Smart and Touch taps lend themselves to today's demanding environments.

Recognising the build quality and sustainable credentials, architects and designers specify the Quatreau Collection globally to set themselves apart and offer an aesthetic finish to clients dynamic spaces.

Here are a few locations where you will find our taps.



**1 WORLD TRADE  
CENTRE**

NEW YORK

**THE SCALPEL**

LONDON

**THE SHARD**

LONDON

**SALESFORCE  
TOWER**

LONDON

Distributed by: Global Water Solutions

**Find out more at: [www.quatreau.com](http://www.quatreau.com)**